

# SRLM MAINS LOCK SWITCHES

## GENERAL ELECTRICAL & MECHANICAL SPECIFICATION

Switch Rating:	4/80A @250V ac. R/C
Life:	>10,000 Cycles
Operating Temperature:	-25°C to +85 °C
Proof Voltage:	3kV min. (Initial)
Insulation Resistance:	>999 MΩ at 500Vdc (Initial)
Contact Resistance:	<20 MΩ (Initial)
Flame Retardency:	UL94 V0
Switch contacts:	Silver Cadmium Oxide
Switch Chamber:	Polyester G.F. (PBT) V0 Rated
Tag Panel:	SRBP
Terminals:	Brass CZ108 Ag Plated
Lock Housing:	Zinc Alloy Bright Chrome Plated
Keys:	Mild Steel Ni Plated

**RoHS COMPLIANT**



Switch Module approved to EN61058 by DEMKO

CIRCUITRY	TERMINAL LAYOUT VIEWED FROM REAR OF SWITCH	KEY WITHDRAWAL POSITIONS
2 POLE OFF-ON		
2 POLE ON-OFF (NORMALLY CLOSED)		

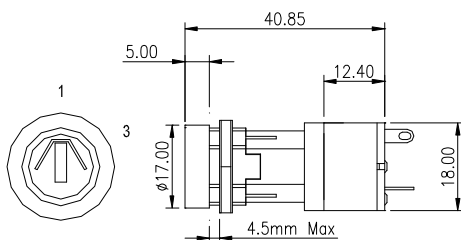
## GENERAL FEATURES

- Made in UK.
- Miniature key –operated Lock
- Up to 200 key combinations - keys to differ
- Common keys available – keys to pass
- Two part construction. The lock is inserted into the panel from the front. The mains switch module snaps-on, from the rear of the panel.
- Standard solder terminals (Printed circuit terminals optional – add /P to part number).
- Two keys per lock. Additional keys to order.
- Snap on switch module

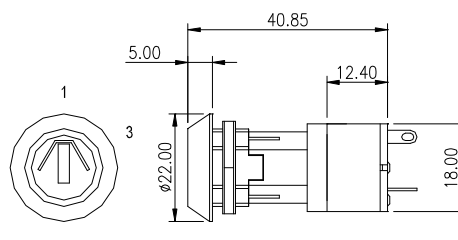
SRLM ORDER CODES				
SWITCH	KEY	POSITION IN WHICH KEY FREE	Tapered lock Head Order-codes	Parallel lock Head Order-codes
2 POLE OFF – ON	DIFFERS DIFFERS	0° and 90° (1+4) 0° only (1)	SRLM -5-Q-D SRLM -5-S-D	SRLM -5-U-D SRLM -5-W-D
2 POLE OFF –ON	SAME SAME	0° and 90° (1+4) 0° only (1)	SRLM -5-Q-S SRLM -5-S-S	SRLM -5-U-S SRLM -5-W-S
2 POLE ON-OFF	DIFFERS DIFFERS	0° and 90° (1+4) 0° only (1)	SRLM -5-R-D SRLM -5-T-D	SRLM -5-V-D SRLM -5-X-D
2 POLE ON-OFF	SAME SAME	0° and 90° (1+4) 0° only (1)	SRLM -5-R-S SRLM-5-T-S	SRLM -5-V-S SRLM-5-X-S

**LOCK TYPE:** 5 Disc.  
**LOCK MOVEMENT:** 90° Steps.  
**LOCK COMBINATIONS:** 200 differs or all to pass (same key for all locks).  
**KEY TYPE:** Flat, double entry (key can be inserted into the lock either way up).  
**MASTER KEY SYSTEM AVAILABLE:** No  
**MAXIMUM PANEL THICKNESS:** 3.4mm.

## SRL LOCKSWITCH WITH SNAP-ON MS MODULE



PARALLEL LOCK HEAD



TAPERED LOCK HEAD

### PANEL PIERCING DETAILS

