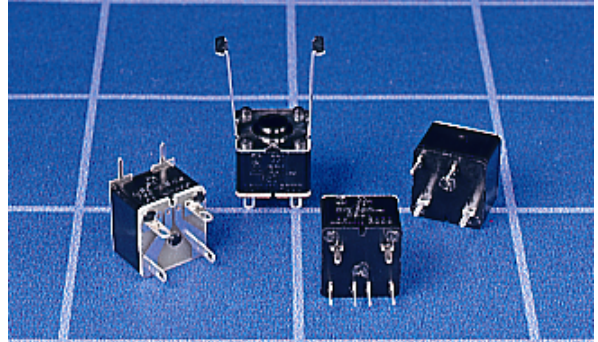


MS 2000 MAINS SWITCH MODULES

GENERAL ELECTRICAL & MECHANICAL SPECIFICATION

| | |
|------------------------|-----------------------------|
| Switch Rating: | 4/80A @ 250Vac R/C |
| Life: | >15,000 Cycles |
| Operating Temp: | -25°C to +85°C |
| Proof Voltage: | 2.5KV (Initial) |
| Insulation Resistance: | >999 MΩ @ 500V DC (Initial) |
| Contact Resistance: | <20 mΩ (Initial) |
| Contact Gap: | 3mm |
| Switch Contacts: | Silver Cadmium Oxide |
| Switch Chamber: | Polyamide 6.6 G.F. V0 Rated |
| Tag Panel: | SRBP |
| Terminals: | Brass CZ108 Ag Plated |

RoHS COMPLIANT



ENEC APPROVED TO EN61058 BY VDE
Note: CHANGEOVER TYPE HAS NO APPROVALS.

| | | |
|----------------------------------|----------------|----------------|
| 2 POLE OFF-ON (NORMALLY OPEN) | | |
| | PLATE | BRACKET |
| ORDERING CODE | MS2126 60° SOL | MS2071 90° SOL |
| | MS2074 30° SOL | |

| | | |
|----------------------|----------------|----------------|
| 2 POLE 1 OFF 1 ON | | |
| | PLATE | BRACKET |
| ORDERING CODE | MS2145 60° SOL | MS2072 90° SOL |
| | MS2075 30° SOL | |

| | | |
|------------------------------------|----------------|----------------|
| 2 POLE ON-OFF (NORMALLY CLOSED) | | |
| | PLATE | BRACKET |
| ORDERING CODE | MS2163 60° SOL | MS2078 90° SOL |
| | MS2133 30° SOL | |

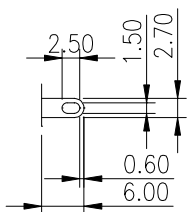
| | | |
|---|----------------|-----------------|
| | SPECIAL PLATE | SPECIAL BRACKET |
| | MS2170 30° PCB | MS2121 30° SOL |
| By externally linking the two pole terminals a 1 pole c/o is made | | |

| | | |
|-------------------------------------|----------------|----------------|
| 2 POLE CHANGEOVER (Not Approved) | | |
| | PLATE | BRACKET |
| ORDERING CODE | MS2146 60° SOL | MS2073 90° SOL |
| | MS2076 30° SOL | |

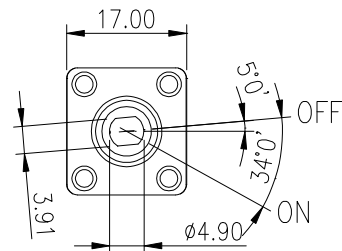
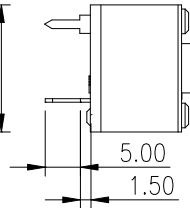
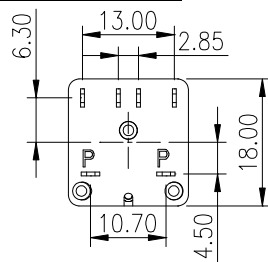
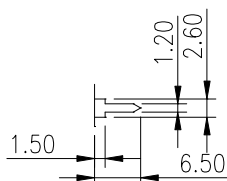
Variants available include Non Bracketed, Bracketed, Plate mounting, Pcb, Solder and with or without stops. Contact our Sales Office with your requirements.

STANDARD SWITCH DETAIL

SOLDER

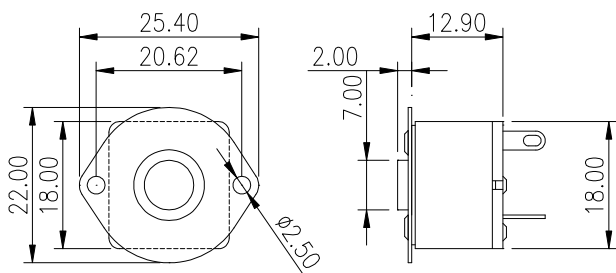


PCB



Orientation in OFF-Position
ie Fully anti-Clockwise

PLATE MOUNTING



MOUNTING BRACKET

